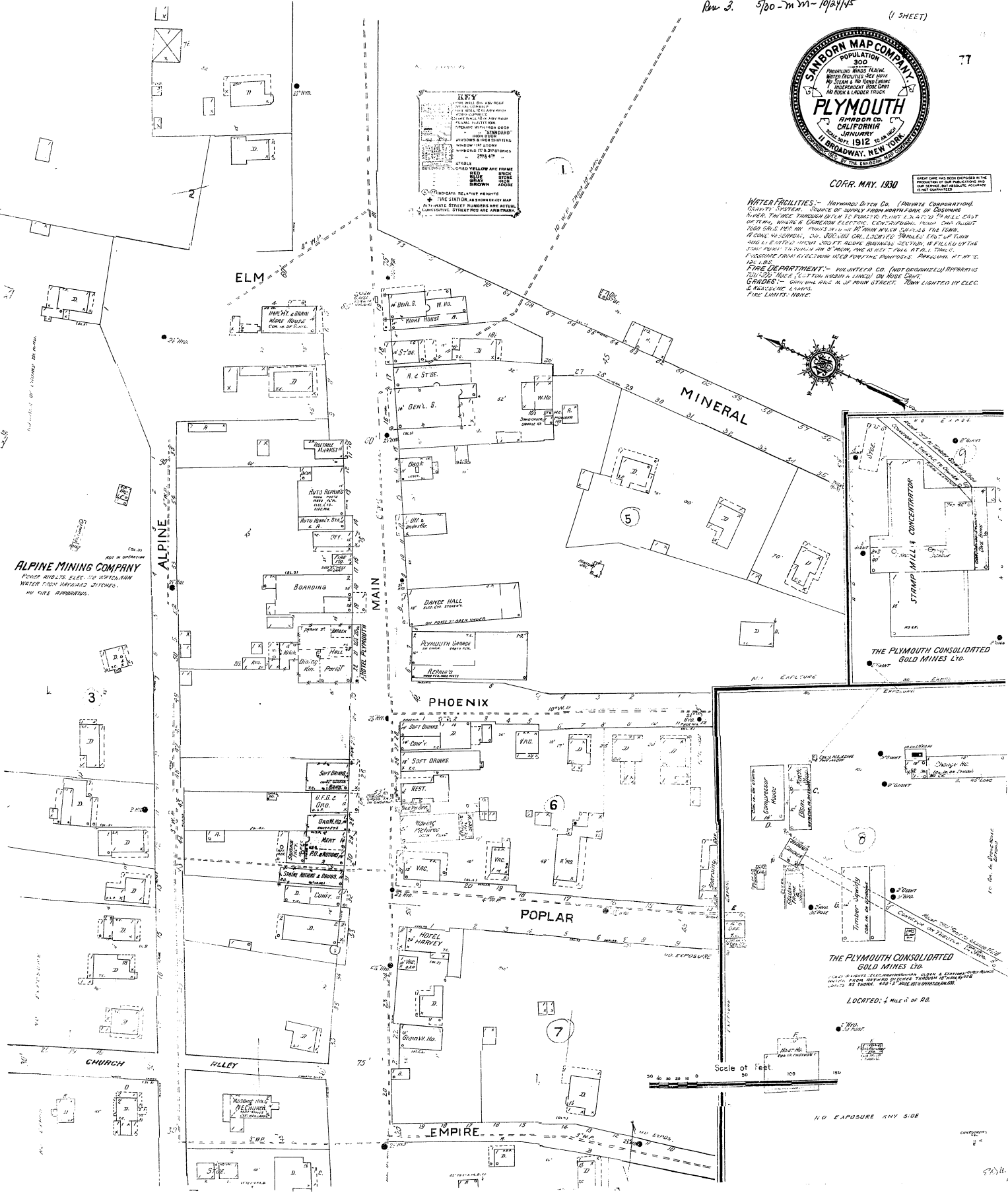


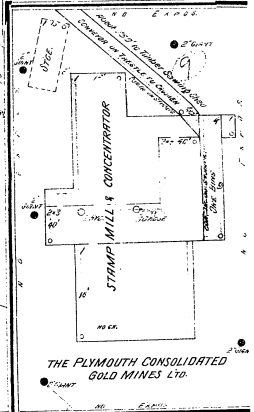
CORR. MAY, 1930

WATER FACILITIES: - HOWLAND DITCH CO. (PRIVATE CORPORATION) QUANTITY SYSTEM. SOURCE OF SUPPLY FROM NORTH FORK OF COYANNE RIVER. TUNNEL THROUGH DITCHED PLAINS. PUMP LIFT 1 1/2 MILES EAST OF TOWN, WHERE A CONCRETE ELECTRIC LEAD-UP PUMP HOUSE CAN RAISE 2000 GALS PER HOUR TO A 100-FOOT WELLS CAPABLE OF DELIVERING 400 GALS PER HOUR. TWO 200-FOOT CAL. LUGGED PUMPS EAST OF TOWN AND LIFTED 1000 GALS PER HOUR. BRASS SECTION IS FILLED BY THE CITY WATER TO BRING TO 50 FEET. ONE 100-FOOT WELL. THREE 100-FOOT PUMPS. PUMP HOUSE USED FOR THE PUMPS. PRESSURE AT 100 FT. IS 100 PSI.

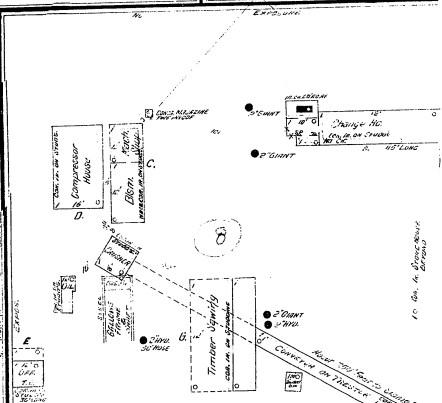
FIRE DEPARTMENT: - VOLUNTEER CO. (NOT ORGANIZED) APPROX. 100-200 GALS. LIFT FOR WATER LIFTED ON HOSE. CO. OWNED. ONLY ONE WELLS IN TOWN. TOWN LIGHTED BY ELECTRIC. FIRE LIGHTS: NONE.



ALPINE MINING COMPANY
POWER AND L.S. ELEC. BY WITCHAMEN
WATER FROM HOWLAND DITCHES.
NO FIRE DEPARTMENT.

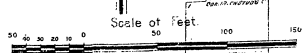


THE PLYMOUTH CONSOLIDATED GOLD MINES LTD.



THE PLYMOUTH CONSOLIDATED GOLD MINES LTD.

LOCATED 1/4 MILE S OF RD.



N.O. EXPOSURE ANY SIDE