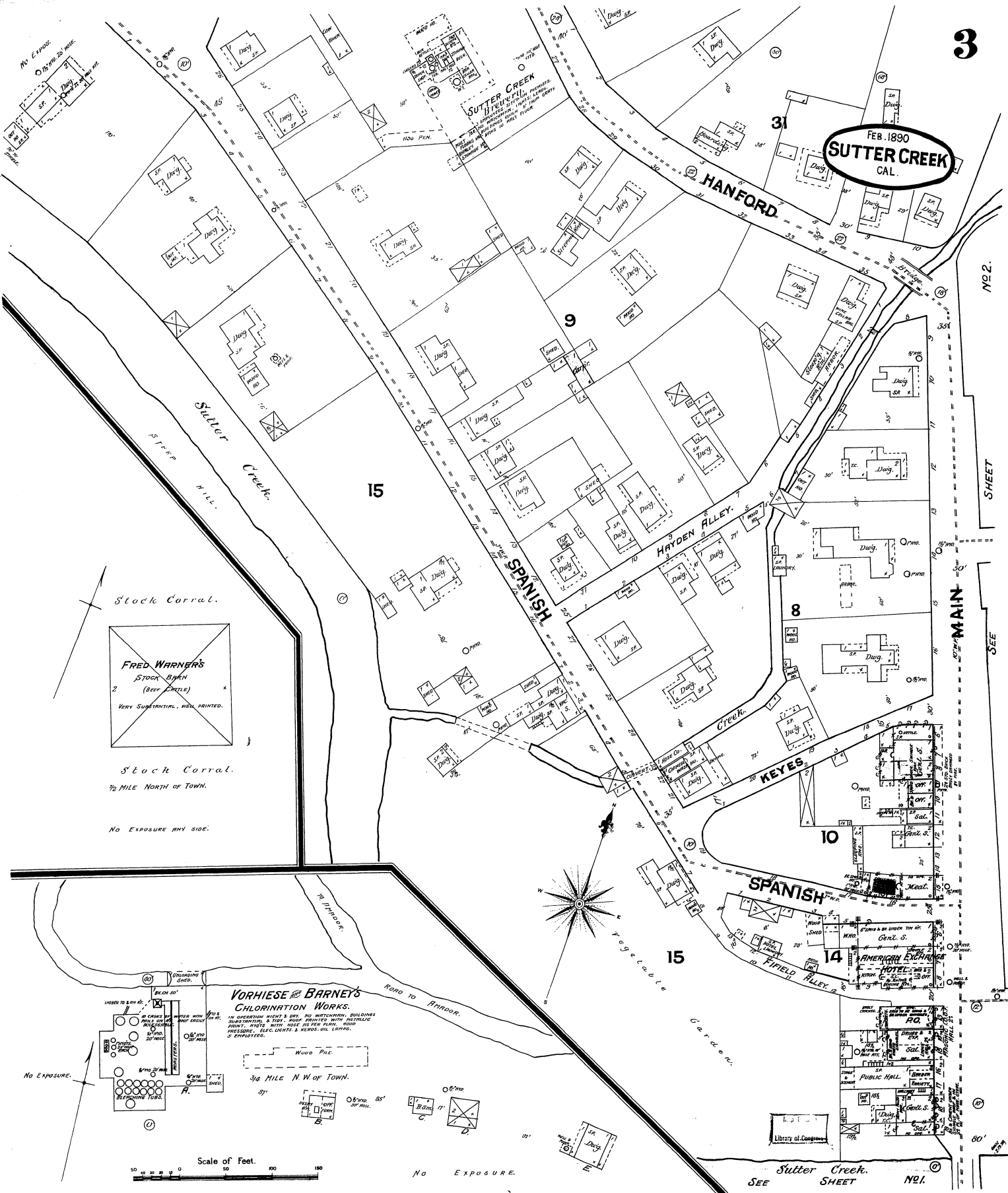


FEB. 1890
SUTTER CREEK
CAL.



Stock Corral.

FRED WARNER'S
Stock Barn
(BEAR CHUTE)
VERY SUBSTANTIAL, WELL PRINTED.

Stock Corral.
1/2 MILE NORTH OF TOWN.

NO EXPOSURE ANY SIDE.

VORHIES & BARNEY'S
CHLORINATION WORKS.

IN OPERATION NIGHT & DAY. NO WASTE-WATER, BUILDINGS
SUBSTANTIAL, & TANKS COVERED WITH TIGHTLY
FITTING TOPS WITH HOSE TO BE KEPT FULLY
PRESSURE. GASES KEPT & KEPT OUT. LITTLE
& EMPLOYEES.

1/4 MILE N.W. OF TOWN.

Scale of Feet.



NO EXPOSURE.

NO. 2.
SHEET

SEE

Sutter Creek.
SEE SHEET NO. 1.