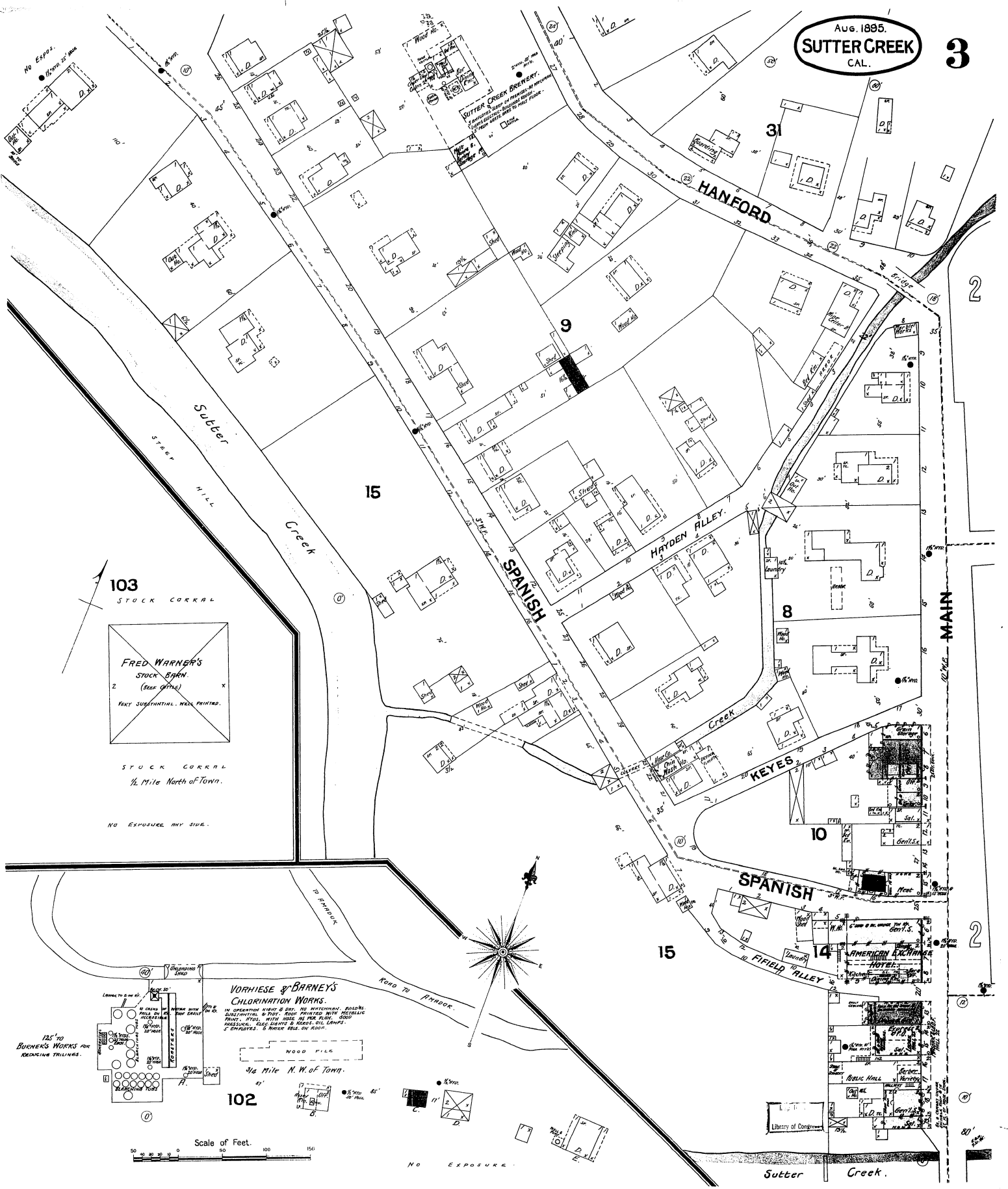


Aug. 1895.  
**SUTTER CREEK**  
CAL.

**3**



**103**  
STOCK CORRAL



**FRED WARNER'S**  
STOCK BARN.  
(See Office)  
VERY SUBSTANTIAL, WELL PAINTED.

STOCK CORRAL  
1/2 Mile North of Town.

NO EXPOSURE ANY SIDE.

**VORNHISE & BARNEY'S**  
CHLORINATION WORKS.  
IN OPERATING ORDER & SET. THE MACHINERY, BUILDING  
SUBSTANTIAL & PROT. ROOF PAINTED WITH METALLIC  
PAINT. STEEL, WITH INSIDE AND OUT PAINT. GOOD  
PRESERVATION. KEEP LIGHT & ACCESS OIL LAMPS  
& EXHAUSTERS. & HOUSE KEYS ON KEYS.

WOOD PILE  
1/2 Mile N.W. of Town.

**102**

Scale of Feet.



NO EXPOSURE